

ACCOMMODATION

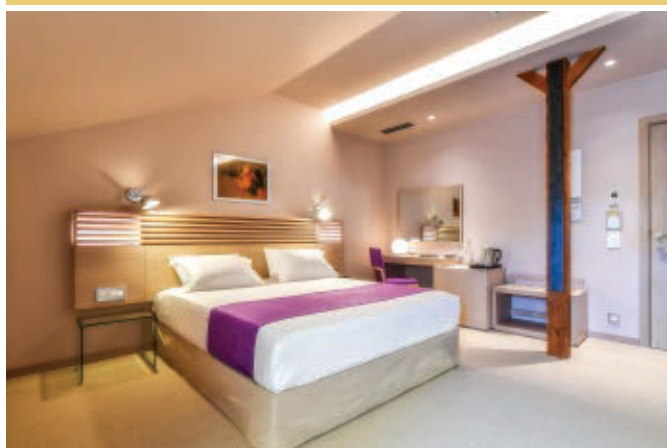


HYDRAMA
GRAND HOTEL



Deluxe Lake & City View

Stylish room with natural and warm colors offer a cozy environment in a modern décor room. Original 100 years old wooden pillars from wild chestnut trees decorate the ceiling and room interior. Comfortable King size bed with pillow menu for a memorable stay. The room includes a 42" LCD Flat screen TV, free wifi, separate WC with heated seat and bidet, mini bar, laptop safe, and hair dryer, and amenities with olive oil. Indoor space approx. 33 m²



Attic on the Loft

Stylish loft with natural and warm colors offer a cozy environment in a modern décor room. Original 100 years old wooden pillars from wild chestnut trees decorate the ceiling and room interior. Comfortable King size bed with pillow menu for a memorable stay. The room includes a 42" LCD Flat screen TV, free wifi, separate WC with heated seat and bidet, mini bar, laptop size safe, and hair dryer, and amenities with olive oil. Indoor space 26 – 32 m²



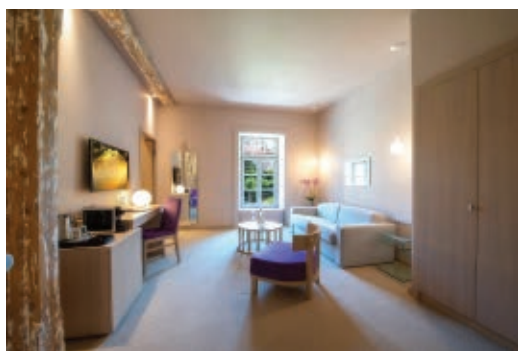
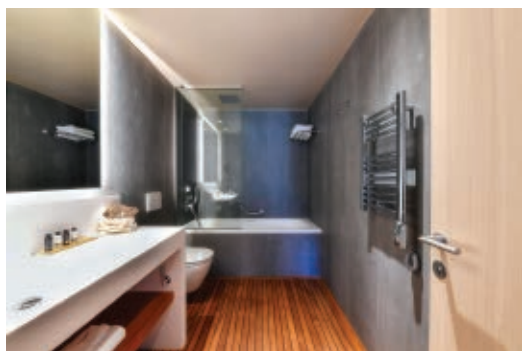
Deluxe Handicap

Stylish room with natural and warm colors offer a cozy environment in a modern décor room. This deluxe room includes handicap equipment for the wc and shower aswell as wider door opennings. The bed is kingsize and there is option for pillow menu for a memorable stay. The room includes a 42" LCD Flat screen TV, free wifi, mini bar, laptop safe, hair dryer and amenities with olive oil. Indoor space 30 m²



Lake Suite

A luxurious and spacious suite with warm colours and modern decoration. The suite comprises a master bedroom, and a wide lounge. Original 100 years old wooden pillars from wild chestnut trees decorate the ceiling and room interior. Comfortable King size bed with pillow menu for a memorable stay. The room includes two LCD Flat screen TV's of 42", free wifi, separate WC with heated seat and bidet, mini bar, laptop safe, hair dryer and amenities with olive oil. Indoor space approx. 60 m²

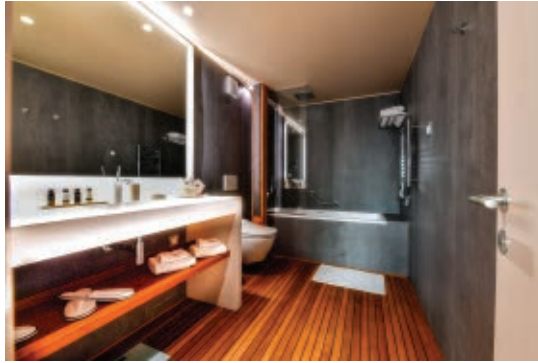


City Suite

A luxurious and cozy suite with warm colours and modern decoration. The suite comprises a master bedroom, and a lounge. Original 100 years old wooden pillars from wild chestnut trees decorate the ceiling and room interior. Comfortable King size bed with pillow menu for a memorable stay. The room includes two LCD Flat screen TV's of 42" in lounge and 32" in master bedroom, free wifi, WC with heated seat and bidet, mini bar, laptop size safe, hair dryer and amenities with olive oil. Indoor space approx. 45 m²

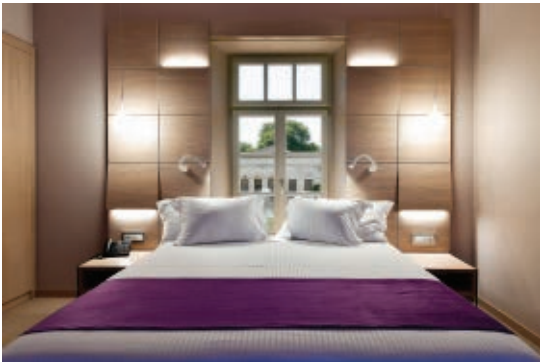


HYDRAMA
GRAND HOTEL



Attic Panorama Suite

The Attic Panorama suite is a luxurious and spacious room on the 5th floor. The suite comprises a master bedroom, lounge and an extra secret room with the best panoramic view of the park. Original 100 years old wooden pillars from wild chestnut trees decorate the room interior. Comfortable King size bed with pillow menu for a memorable stay. The room includes two LCD Flat screen TV's consisting of a 32" in the secret room and a 55" in the lounge-bed room. Free wifi, WC with heated seat and bidet, mini bar, espresso machine, laptop safe, hair dryer and amenities with olive oil.



Hydrama Grand Suite

Luxurious and spacious corner suite overlooking the springs & lakes of the park. It comes with indoor veranda with Jacuzzi & fitness equipment, office desk with laptop and color printer. Comfortable King size bed for a memorable stay, 2 LCD Flat screen TV's consisting of a 55" in the lounge and a 42" in master bedroom. Design solid surface wall to wall bathroom, king size double shower, separate WC with heated seat and bidet. Hydrama Grand Suite also includes mini bar, espresso machine, laptop size safe, hair dryer and amenities with olive oil. Indoor space approx. 70 m²



Presidential Suite

Luxurious and spacious corner suite overlooking the springs & lakes of the park. It comes with indoor veranda with Jacuzzi & fitness equipment, office desk with laptop and color printer. Two Comfortable King size beds for a memorable stay, 3 LCD Flat screen TV's consisting of a 55" in the lounge and two 42" in the bedrooms. Design solid surface wall to wall bathroom, king size double shower, separate bathroom, two electronic heated and bidet wcs, two mini bars, espresso machine, boiler, two laptop size safes, two hair dryers and amenities with olive oil. The presidential suite is a combination of Hydrama Grand Suite and a Deluxe Lake View room. Indoor space approx. 103 m²